



Northwest Indian Fisheries Commission

2013

Big Game Harvest Report Western Washington Treaty Tribes



*Northwest Indian Fisheries Commission
6730 Martin Way E.
Olympia, Washington 98516*

2013 Deer and Elk Harvest by Game Management Unit

- Tribal harvest for the 2013 season is representative of the 20 member NWIFC western Washington Treaty Tribes.

| | | |
|---------------------|---------------------------|---------------------------|
| Nisqually Tribe | Puyallup Tribe | Muckleshoot Tribe |
| Hoh Tribe | Squaxin Island Tribe | Upper Skagit Tribe |
| Stillaguamish Tribe | Lummi Tribe | Nooksack Tribe |
| Tulalip Tribe | Sauk-Suiattle Tribe | Suquamish Tribe |
| Quinault Tribe | Skokomish Tribe | Jamestown S'Klallam Tribe |
| Port Gamble Tribe | Makah Tribe | Quileute Tribe |
| Swinomish Tribe | Lower Elwha Klallam Tribe | |

- Tribal harvest data within this report is reflective of the above listed tribes and does not account for harvest by other tribes with off reservation hunting rights.
- Tribal harvest information is based upon the Northwest Indian Fisheries Commission Tribal Harvest Database. State harvest was derived from Washington Department of Fish and Wildlife 2013 Game Harvest Report.
- The following spreadsheets represent state and tribal deer and elk harvest by GMU for the 2013 hunting season. The following data is broken down by hunter group (state or tribal), sex (buck/doe or bull/cow), percent harvest by sex, total harvest by hunter group and combined hunter group harvest.
- State harvest is representative of statewide general seasons and special permit seasons as reported. Animals harvested under the wildlife damage prevention program are not included in this data.
- **Unknown Harvest:** There were 4 bull elk; 1 cow elk; 2 buck deer and 2 doe deer harvested from unreported GMUs.

Legend:

Game Mgt. Unit = Game Management Unit

State/Buck or State/Bull = State Male Deer or Elk Harvest

Tribal/Buck or State/Bull = Tribal Male Deer or Elk Harvest

Total Harvest = Total Harvest either by Sex or Hunting Group

State % = Percent Harvest by State Hunters

Tribal % = Percent Harvest by Tribal Hunters

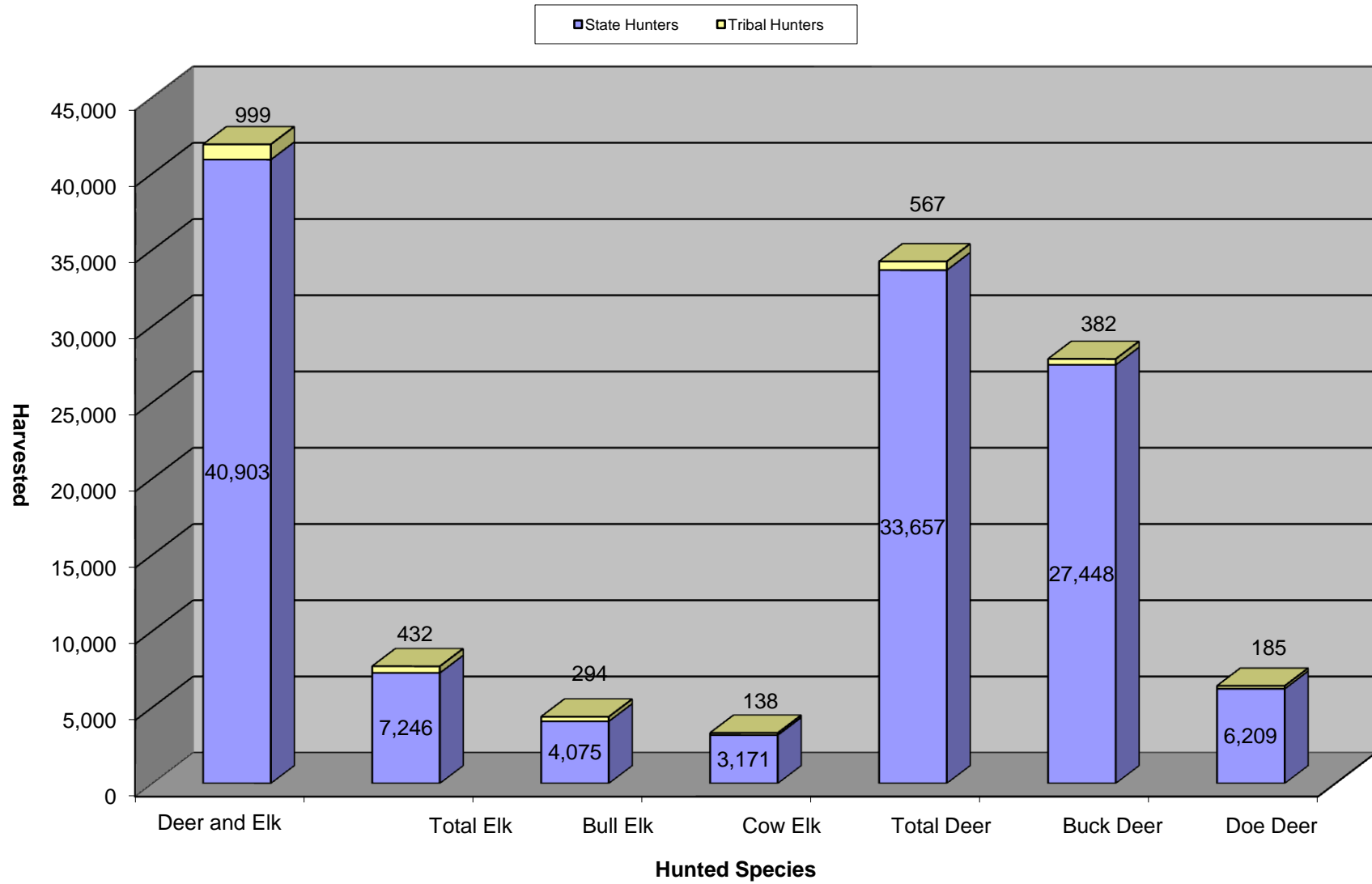
State/Doe or State/Cow = State Female Deer or Elk Harvest

Tribal/Doe or Tribal/Cow = Tribal Female Deer or Elk Harvest

State/Total = Total GMU Harvest by State Hunters

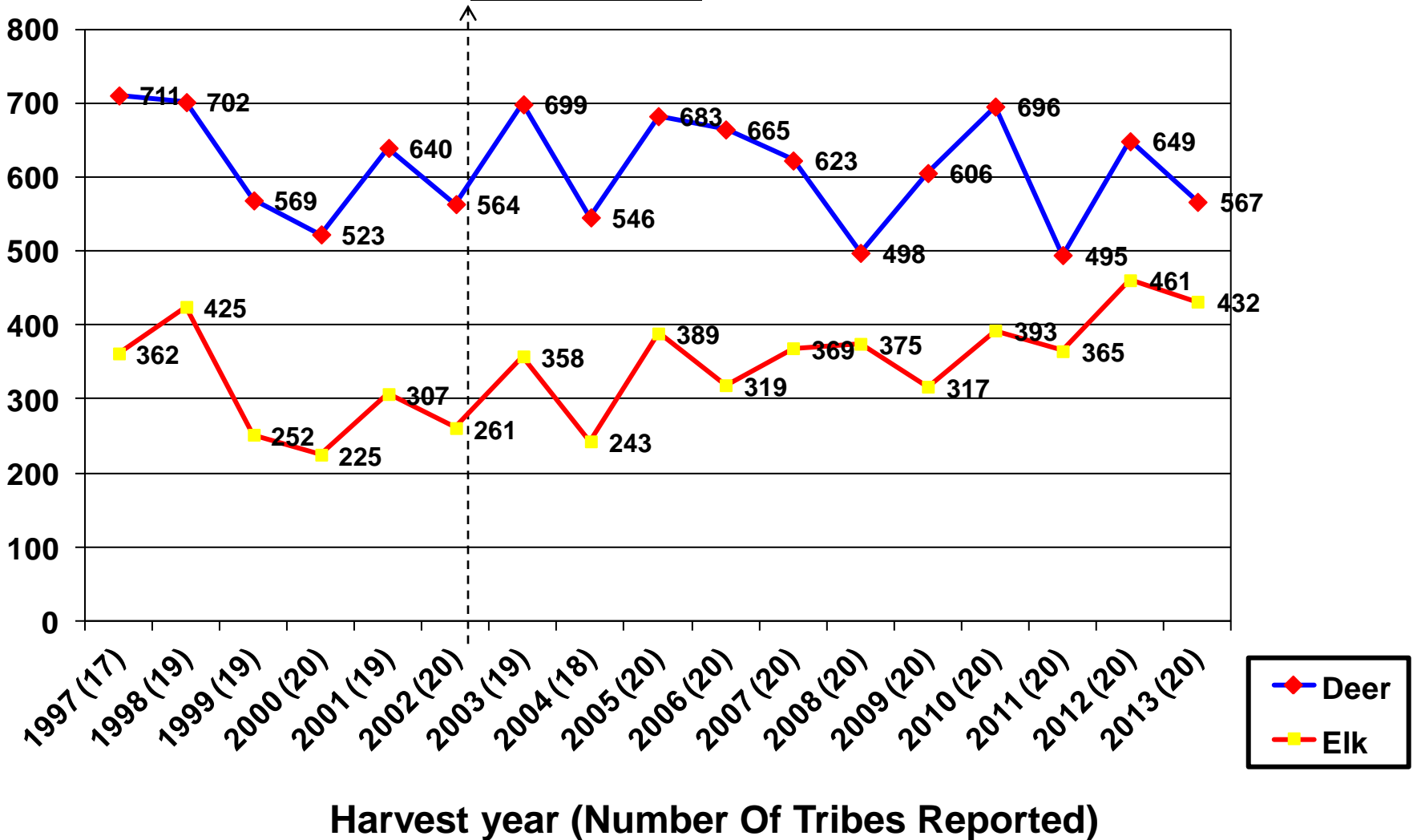
Tribal/Total = Total GMU Harvest by Tribal Hunters

2013 Harvest Data



Tribal Harvest

Post Buchanan



2013 Region 1 Deer Harvest by GMU

| Game Mgt. Unit Name | Game Mgt. Unit | State Buck | Tribal Buck | Total Harvest | State % | Tribal % | State Doe | Tribal Doe | Total Harvest | State % | Tribal % | State Total | Tribal Total | State % | Tribal % | Total Harvest |
|------------------------|-------------------|---------------|----------------|------------------|-------------|-------------|--------------|---------------|------------------|-------------|-------------|----------------|-----------------|-------------|-------------|------------------|
| Sherman | 101 | 808 | 0 | 808 | 100% | 0% | 209 | 0 | 209 | 100% | 0% | 1017 | 0 | 100% | 0% | 1017 |
| Kelly Hill | 105 | 311 | 0 | 311 | 100% | 0% | 38 | 0 | 38 | 100% | 0% | 349 | 0 | 100% | 0% | 349 |
| Douglas | 108 | 358 | 0 | 358 | 100% | 0% | 53 | 0 | 53 | 100% | 0% | 411 | 0 | 100% | 0% | 411 |
| Aladdin | 111 | 442 | 0 | 442 | 100% | 0% | 49 | 0 | 49 | 100% | 0% | 491 | 0 | 100% | 0% | 491 |
| Selkirk | 113 | 426 | 0 | 426 | 100% | 0% | 29 | 0 | 29 | 100% | 0% | 455 | 0 | 100% | 0% | 455 |
| 49 Degrees N. | 117 | 733 | 0 | 733 | 100% | 0% | 204 | 0 | 204 | 100% | 0% | 937 | 0 | 100% | 0% | 937 |
| Huckleberry | 121 | 1081 | 0 | 1081 | 100% | 0% | 280 | 0 | 280 | 100% | 0% | 1361 | 0 | 100% | 0% | 1361 |
| Mt. Spokane | 124 | 1970 | 0 | 1970 | 100% | 0% | 718 | 0 | 718 | 100% | 0% | 2688 | 0 | 100% | 0% | 2688 |
| Mica Peak | 127 | 401 | 0 | 401 | 100% | 0% | 167 | 0 | 167 | 100% | 0% | 568 | 0 | 100% | 0% | 568 |
| Cheney | 130 | 490 | 0 | 490 | 100% | 0% | 226 | 0 | 226 | 100% | 0% | 716 | 0 | 100% | 0% | 716 |
| Roosevelt | 133 | 504 | 0 | 504 | 100% | 0% | 260 | 0 | 260 | 100% | 0% | 764 | 0 | 100% | 0% | 764 |
| Harrington | 136 | 468 | 0 | 468 | 100% | 0% | 136 | 0 | 136 | 100% | 0% | 604 | 0 | 100% | 0% | 604 |
| Steptoe | 139 | 885 | 0 | 885 | 100% | 0% | 293 | 0 | 293 | 100% | 0% | 1178 | 0 | 100% | 0% | 1178 |
| Almota | 142 | 683 | 0 | 683 | 100% | 0% | 160 | 0 | 160 | 100% | 0% | 843 | 0 | 100% | 0% | 843 |
| Mayview | 145 | 393 | 0 | 393 | 100% | 0% | 82 | 0 | 82 | 100% | 0% | 475 | 0 | 100% | 0% | 475 |
| Prescott | 149 | 833 | 0 | 833 | 100% | 0% | 87 | 0 | 87 | 100% | 0% | 920 | 0 | 100% | 0% | 920 |
| Blue Creek | 154 | 241 | 0 | 241 | 100% | 0% | 151 | 0 | 151 | 100% | 0% | 392 | 0 | 100% | 0% | 392 |
| Mill Creek | 157 | 0 | 0 | 0 | 0% | 0% | 0 | 0 | 0 | 0% | 0% | 0 | 0 | 0% | 0% | 0 |
| Dayton | 162 | 381 | 0 | 381 | 100% | 0% | 106 | 0 | 106 | 100% | 0% | 487 | 0 | 100% | 0% | 487 |
| Marengo | 163 | 124 | 0 | 124 | 100% | 0% | 34 | 0 | 34 | 100% | 0% | 158 | 0 | 100% | 0% | 158 |
| Tucannon | 166 | 131 | 0 | 131 | 100% | 0% | 12 | 0 | 12 | 100% | 0% | 143 | 0 | 100% | 0% | 143 |
| Wenaha | 169 | 40 | 0 | 40 | 100% | 0% | 0 | 0 | 0 | 0% | 0% | 40 | 0 | 100% | 0% | 40 |
| Mountain View | 172 | 75 | 0 | 75 | 100% | 0% | 1 | 0 | 1 | 100% | 0% | 76 | 0 | 100% | 0% | 76 |
| Lick Creek | 175 | 58 | 0 | 58 | 100% | 0% | 2 | 0 | 2 | 100% | 0% | 60 | 0 | 100% | 0% | 60 |
| Peola | 178 | 219 | 0 | 219 | 100% | 0% | 29 | 0 | 29 | 100% | 0% | 248 | 0 | 100% | 0% | 248 |
| Couse | 181 | 226 | 0 | 226 | 100% | 0% | 8 | 0 | 8 | 100% | 0% | 234 | 0 | 100% | 0% | 234 |
| Grande Ronde | 186 | 36 | 0 | 36 | 100% | 0% | 0 | 0 | 0 | 100% | 0% | 36 | 0 | 100% | 0% | 36 |
| Total | | 12317 | 0 | 12317 | 100% | 0% | 3334 | 0 | 3334 | 100% | 0% | 15651 | 0 | 100% | 0% | 15651 |

2013 Region 2 Deer Harvest by GMU

| Game Mgt. Unit Name | Game Mgt. Unit | State Buck | Tribal Buck | Total Harvest | State % | Tribal % | State Doe | Tribal Doe | Total Harvest | State % | Tribal % | State Total | Tribal Total | State % | Tribal % | Total Harvest |
|------------------------|-------------------|---------------|----------------|------------------|-------------|-------------|--------------|---------------|------------------|-------------|-------------|----------------|-----------------|-------------|-------------|------------------|
| Pasayten | 203 | 54 | 2 | 56 | 96% | 4% | 2 | 0 | 2 | 0% | 0% | 58 | 2 | 97% | 3% | 60 |
| Okanogan | 204 | 514 | 0 | 514 | 100% | 0% | 134 | 0 | 134 | 100% | 0% | 648 | 0 | 100% | 0% | 648 |
| Wannacut | 209 | 87 | 0 | 87 | 100% | 0% | 18 | 0 | 18 | 100% | 0% | 105 | 0 | 100% | 0% | 105 |
| Sinlahekin | 215 | 228 | 0 | 228 | 100% | 0% | 56 | 0 | 56 | 100% | 0% | 284 | 0 | 100% | 0% | 284 |
| Chewuch | 218 | 279 | 0 | 279 | 100% | 0% | 78 | 0 | 78 | 100% | 0% | 357 | 0 | 100% | 0% | 357 |
| Pearrygin | 224 | 231 | 0 | 231 | 100% | 0% | 50 | 0 | 50 | 100% | 0% | 281 | 0 | 100% | 0% | 281 |
| Gardner | 231 | 129 | 0 | 129 | 100% | 0% | 38 | 0 | 38 | 100% | 0% | 167 | 0 | 100% | 0% | 167 |
| Pogue | 233 | 168 | 0 | 168 | 100% | 0% | 34 | 0 | 34 | 100% | 0% | 202 | 0 | 100% | 0% | 202 |
| Chilliwist | 239 | 117 | 0 | 117 | 100% | 0% | 10 | 0 | 10 | 100% | 0% | 127 | 0 | 100% | 0% | 127 |
| Alta | 242 | 134 | 0 | 134 | 100% | 0% | 23 | 0 | 23 | 100% | 0% | 157 | 0 | 100% | 0% | 157 |
| Manson | 243 | 93 | 0 | 93 | 100% | 0% | 1 | 0 | 1 | 100% | 0% | 94 | 0 | 100% | 0% | 94 |
| Clark | 244 | 24 | 0 | 24 | 100% | 0% | 1 | 0 | 1 | 100% | 0% | 25 | 0 | 100% | 0% | 25 |
| Chiwawa | 245 | 126 | 0 | 126 | 100% | 0% | 37 | 0 | 37 | 100% | 0% | 163 | 0 | 100% | 0% | 163 |
| Slide Ridge | 246 | 65 | 0 | 65 | 100% | 0% | 7 | 0 | 7 | 100% | 0% | 72 | 0 | 100% | 0% | 72 |
| Entiat | 247 | 213 | 0 | 213 | 100% | 0% | 57 | 0 | 57 | 100% | 0% | 270 | 0 | 100% | 0% | 270 |
| Big Bend | 248 | 179 | 0 | 179 | 100% | 0% | 40 | 0 | 40 | 100% | 0% | 219 | 0 | 100% | 0% | 219 |
| Alpine | 249 | 37 | 0 | 37 | 100% | 0% | 2 | 0 | 2 | 100% | 0% | 39 | 0 | 100% | 0% | 39 |
| Swakane | 250 | 165 | 0 | 165 | 100% | 0% | 24 | 0 | 24 | 100% | 0% | 189 | 0 | 100% | 0% | 189 |
| Mission | 251 | 123 | 0 | 123 | 100% | 0% | 22 | 0 | 22 | 100% | 0% | 145 | 0 | 100% | 0% | 145 |
| Saint Andrews | 254 | 92 | 0 | 92 | 100% | 0% | 16 | 0 | 16 | 100% | 0% | 108 | 0 | 100% | 0% | 108 |
| Foster Creek | 260 | 113 | 0 | 113 | 100% | 0% | 20 | 0 | 20 | 100% | 0% | 133 | 0 | 100% | 0% | 133 |
| Withrow | 262 | 106 | 0 | 106 | 100% | 0% | 9 | 0 | 9 | 100% | 0% | 115 | 0 | 100% | 0% | 115 |
| Badger | 266 | 92 | 0 | 92 | 100% | 0% | 13 | 0 | 13 | 100% | 0% | 105 | 0 | 100% | 0% | 105 |
| Moses Coulee | 269 | 90 | 0 | 90 | 100% | 0% | 12 | 0 | 12 | 100% | 0% | 102 | 0 | 100% | 0% | 102 |
| Beezley | 272 | 317 | 0 | 317 | 100% | 0% | 47 | 0 | 47 | 100% | 0% | 364 | 0 | 100% | 0% | 364 |
| Wahluke | 278 | 48 | 0 | 48 | 100% | 0% | 16 | 0 | 16 | 100% | 0% | 64 | 0 | 100% | 0% | 64 |
| Ritzville | 284 | 352 | 0 | 352 | 100% | 0% | 27 | 0 | 27 | 100% | 0% | 379 | 0 | 100% | 0% | 379 |
| Desert | 290 | 16 | 0 | 16 | 100% | 0% | 23 | 0 | 23 | 100% | 0% | 39 | 0 | 100% | 0% | 39 |
| Total | | 4192 | 2 | 4194 | 100% | 0% | 817 | 0 | 817 | 100% | 0% | 5011 | 2 | 100% | 0% | 5013 |

2013 Region 3 Deer Harvest by GMU

| Game Mgt. Unit Name | Game Mgt. Unit | State Buck | Tribal Buck | Total Harvest | State % | Tribal % | State Doe | Tribal Doe | Total Harvest | State % | Tribal % | State Total | Tribal Total | State % | Tribal % | Total Harvest |
|------------------------|-------------------|---------------|----------------|------------------|-------------|-------------|--------------|---------------|------------------|-------------|-------------|----------------|-----------------|-------------|-------------|------------------|
| Naneum | 328 | 102 | 0 | 102 | 100% | 0% | 3 | 0 | 3 | 100% | 0% | 105 | 0 | 100% | 0% | 105 |
| Quilomene | 329 | 9 | 0 | 9 | 100% | 0% | 0 | 0 | 0 | 0% | 0% | 9 | 0 | 100% | 0% | 9 |
| West Bar | 330 | 3 | 0 | 3 | 100% | 0% | 0 | 0 | 0 | 0% | 0% | 3 | 0 | 100% | 0% | 3 |
| Ellensburg | 334 | 27 | 0 | 27 | 100% | 0% | 1 | 0 | 1 | 100% | 0% | 28 | 0 | 100% | 0% | 28 |
| Teanaway | 335 | 175 | 0 | 175 | 100% | 0% | 0 | 0 | 0 | 0% | 0% | 175 | 0 | 100% | 0% | 175 |
| Taneum | 336 | 31 | 0 | 31 | 100% | 0% | 0 | 0 | 0 | 0% | 0% | 31 | 0 | 100% | 0% | 31 |
| Manastash | 340 | 121 | 0 | 121 | 100% | 0% | 0 | 0 | 0 | 0% | 0% | 121 | 0 | 100% | 0% | 121 |
| Umtanum | 342 | 119 | 0 | 119 | 100% | 0% | 0 | 0 | 0 | 0% | 0% | 119 | 0 | 100% | 0% | 119 |
| Little Naches | 346 | 33 | 0 | 33 | 100% | 0% | 0 | 0 | 0 | 0% | 0% | 33 | 0 | 100% | 0% | 33 |
| Nile | 352 | 30 | 0 | 30 | 100% | 0% | 0 | 0 | 0 | 0% | 0% | 30 | 0 | 100% | 0% | 30 |
| Bumping | 356 | 5 | 0 | 5 | 100% | 0% | 0 | 0 | 0 | 0% | 0% | 5 | 0 | 100% | 0% | 5 |
| Bethel | 360 | 23 | 0 | 23 | 100% | 0% | 1 | 0 | 1 | 100% | 0% | 24 | 0 | 100% | 0% | 24 |
| Rimrock | 364 | 16 | 0 | 16 | 100% | 0% | 0 | 0 | 0 | 0% | 0% | 16 | 0 | 100% | 0% | 16 |
| Cowiche | 368 | 127 | 0 | 127 | 100% | 0% | 0 | 0 | 0 | 0% | 0% | 127 | 0 | 100% | 0% | 127 |
| Alkali | 371 | 7 | 0 | 7 | 100% | 0% | 0 | 0 | 0 | 0% | 0% | 7 | 0 | 100% | 0% | 7 |
| Rattlesnake | 372 | 47 | 0 | 47 | 100% | 0% | 4 | 0 | 4 | 100% | 0% | 51 | 0 | 100% | 0% | 51 |
| Horse Heaven | 373 | 92 | 0 | 92 | 100% | 0% | 20 | 0 | 20 | 100% | 0% | 112 | 0 | 100% | 0% | 112 |
| Ringold | 379 | 33 | 0 | 33 | 100% | 0% | 4 | 0 | 4 | 100% | 0% | 37 | 0 | 100% | 0% | 37 |
| Kahlotus | 381 | 416 | 0 | 416 | 100% | 0% | 221 | 0 | 221 | 100% | 0% | 637 | 0 | 100% | 0% | 637 |
| E. Klickitat | 382 | 442 | 0 | 442 | 100% | 0% | 86 | 0 | 86 | 100% | 0% | 528 | 0 | 100% | 0% | 528 |
| Grayback | 388 | 435 | 0 | 435 | 100% | 0% | 70 | 0 | 70 | 100% | 0% | 505 | 0 | 100% | 0% | 505 |
| Total | | 2293 | 0 | 2293 | 100% | 0% | 410 | 0 | 410 | 100% | 0% | 2703 | 0 | 100% | 0% | 2703 |

2013 Region 4 Deer Harvest by GMU

| Game Mgt. Unit Name | Game Mgt. Unit | State Buck | Tribal Buck | Total Harvest | State % | Tribal % | State Doe | Tribal Doe | Total Harvest | State % | Tribal % | State Total | Tribal Total | State % | Tribal % | Total Harvest |
|---------------------|----------------|-------------|-------------|---------------|------------|-----------|------------|------------|---------------|------------|------------|-------------|--------------|------------|-----------|---------------|
| North Sound | 407 | 526 | 17 | 543 | 97% | 3% | 134 | 8 | 142 | 94% | 6% | 660 | 25 | 96% | 4% | 685 |
| Islands | 410 | 343 | 0 | 343 | 100% | 0% | 146 | 0 | 146 | 100% | 0% | 489 | 0 | 100% | 0% | 489 |
| Orcas | 411 | 21 | 0 | 21 | 100% | 0% | 12 | 0 | 12 | 100% | 0% | 33 | 0 | 100% | 0% | 33 |
| Shaw | 412 | 11 | 0 | 11 | 100% | 0% | 5 | 0 | 5 | 100% | 0% | 16 | 0 | 100% | 0% | 16 |
| San Juan | 413 | 18 | 0 | 18 | 100% | 0% | 11 | 0 | 11 | 100% | 0% | 29 | 0 | 100% | 0% | 29 |
| Lopez | 414 | 20 | 0 | 20 | 100% | 0% | 10 | 0 | 10 | 100% | 0% | 30 | 0 | 100% | 0% | 30 |
| Blakely | 415 | 14 | 0 | 14 | 100% | 0% | 5 | 0 | 5 | 100% | 0% | 19 | 0 | 100% | 0% | 19 |
| Decatur | 416 | 5 | 0 | 5 | 100% | 0% | 1 | 0 | 1 | 100% | 0% | 6 | 0 | 100% | 0% | 6 |
| Cypress | 417 | 1 | 0 | 1 | 100% | 0% | 5 | 0 | 5 | 100% | 0% | 6 | 0 | 100% | 0% | 6 |
| Nooksack | 418 | 114 | 42 | 156 | 73% | 27% | 8 | 24 | 32 | 25% | 75% | 122 | 66 | 65% | 35% | 188 |
| Guemes | 419 | 4 | 0 | 4 | 100% | 0% | 1 | 0 | 1 | 100% | 0% | 5 | 0 | 100% | 0% | 5 |
| Whibdey | 420 | 103 | 0 | 103 | 100% | 0% | 45 | 0 | 45 | 100% | 0% | 148 | 0 | 100% | 0% | 148 |
| Camano | 421 | 12 | 0 | 12 | 100% | 0% | 10 | 0 | 10 | 100% | 0% | 22 | 0 | 100% | 0% | 22 |
| Vashon-Maury | 422 | 77 | 0 | 77 | 100% | 0% | 44 | 0 | 44 | 100% | 0% | 121 | 0 | 100% | 0% | 121 |
| Diablo | 426 | 12 | 0 | 12 | 100% | 0% | 3 | 0 | 3 | 100% | 0% | 15 | 0 | 100% | 0% | 15 |
| Sauk | 437 | 143 | 20 | 163 | 88% | 12% | 22 | 26 | 48 | 46% | 54% | 165 | 46 | 78% | 22% | 211 |
| Stillaguamish | 448 | 153 | 7 | 160 | 96% | 4% | 19 | 2 | 21 | 90% | 10% | 172 | 9 | 95% | 5% | 181 |
| Cascade | 450 | 6 | 0 | 6 | 100% | 0% | 0 | 0 | 0 | 0% | 0% | 6 | 0 | 100% | 0% | 6 |
| Issaquah | 454 | 153 | 10 | 163 | 94% | 6% | 57 | 5 | 62 | 92% | 8% | 210 | 15 | 93% | 7% | 225 |
| Snoqualmie | 460 | 202 | 2 | 204 | 99% | 1% | 0 | 2 | 2 | 0% | 100% | 202 | 4 | 98% | 2% | 206 |
| Stampede | 466 | 15 | 8 | 23 | 65% | 35% | 2 | 2 | 4 | 50% | 50% | 17 | 10 | 63% | 37% | 27 |
| Green River | 485 | 3 | 7 | 10 | 30% | 70% | 6 | 2 | 8 | 75% | 25% | 9 | 9 | 50% | 50% | 18 |
| Cedar River | 490 | 0 | 9 | 9 | 0% | 100% | 0 | 0 | 0 | 0% | 0% | 0 | 9 | 0% | 100% | 9 |
| Total | | 1956 | 122 | 2078 | 94% | 6% | 546 | 71 | 617 | 88% | 12% | 2502 | 193 | 93% | 7% | 2695 |

2013 Region 5 Deer Harvest by GMU

| Game Mgt. Unit Name | Game Mgt. Unit | State Buck | Tribal Buck | Total Buck | State % | Tribal % | State Doe | Tribal Doe | Total Harvest | State % | Tribal % | State Total | Tribal Total | State % | Tribal % | Total Harvest |
|---------------------|----------------|-------------|-------------|-------------|------------|-----------|------------|------------|---------------|------------|-----------|-------------|--------------|------------|-----------|---------------|
| Lincoln | 501 | 319 | 0 | 319 | 100% | 0% | 51 | 0 | 51 | 100% | 0% | 370 | 0 | 100% | 0% | 370 |
| Randle | 503 | 44 | 14 | 58 | 76% | 24% | 0 | 12 | 12 | 0% | 100% | 44 | 26 | 63% | 37% | 70 |
| Stella | 504 | 54 | 0 | 54 | 100% | 0% | 21 | 1 | 22 | 95% | 5% | 75 | 1 | 99% | 1% | 76 |
| Mossyrock | 505 | 267 | 0 | 267 | 100% | 0% | 64 | 1 | 65 | 98% | 2% | 331 | 1 | 100% | 0% | 332 |
| Willapa Hills | 506 | 199 | 0 | 199 | 100% | 0% | 4 | 0 | 4 | 100% | 0% | 203 | 0 | 100% | 0% | 203 |
| Stormking | 510 | 81 | 0 | 81 | 100% | 0% | 7 | 0 | 7 | 100% | 0% | 88 | 0 | 100% | 0% | 88 |
| South Rainier | 513 | 21 | 5 | 26 | 81% | 19% | 6 | 5 | 11 | 55% | 45% | 27 | 10 | 73% | 27% | 37 |
| Packwood | 516 | 80 | 7 | 87 | 92% | 8% | 6 | 13 | 19 | 32% | 68% | 86 | 20 | 81% | 19% | 106 |
| Winston | 520 | 326 | 0 | 326 | 100% | 0% | 56 | 0 | 56 | 100% | 0% | 382 | 0 | 100% | 0% | 382 |
| Loo-Wit | 522 | 0 | 0 | 0 | 0% | 0% | 0 | 0 | 0 | 0% | 0% | 0 | 0 | 0% | 0% | 0 |
| Margaret | 524 | 18 | 0 | 18 | 100% | 0% | 4 | 0 | 4 | 100% | 0% | 22 | 0 | 100% | 0% | 22 |
| Ryderwood | 530 | 391 | 0 | 391 | 100% | 0% | 4 | 0 | 4 | 100% | 0% | 395 | 0 | 100% | 0% | 395 |
| Coweeman | 550 | 317 | 0 | 317 | 100% | 0% | 9 | 0 | 9 | 100% | 0% | 326 | 0 | 100% | 0% | 326 |
| Yale | 554 | 37 | 0 | 37 | 100% | 0% | 13 | 0 | 13 | 100% | 0% | 50 | 0 | 100% | 0% | 50 |
| Toutle | 556 | 73 | 0 | 73 | 100% | 0% | 24 | 0 | 24 | 100% | 0% | 97 | 0 | 100% | 0% | 97 |
| Lewis River | 560 | 71 | 1 | 72 | 99% | 1% | 0 | 0 | 0 | 0% | 0% | 71 | 1 | 99% | 1% | 72 |
| Battle Ground | 564 | 271 | 0 | 271 | 100% | 0% | 157 | 0 | 157 | 100% | 0% | 428 | 0 | 100% | 0% | 428 |
| Washougal | 568 | 422 | 0 | 422 | 100% | 0% | 56 | 0 | 56 | 100% | 0% | 478 | 0 | 100% | 0% | 478 |
| Siouxon | 572 | 74 | 0 | 74 | 100% | 0% | 1 | 0 | 1 | 100% | 0% | 75 | 0 | 100% | 0% | 75 |
| Wind River | 574 | 128 | 0 | 128 | 100% | 0% | 6 | 0 | 6 | 100% | 0% | 134 | 0 | 100% | 0% | 134 |
| Klickitat | 578 | 311 | 0 | 311 | 100% | 0% | 11 | 0 | 11 | 100% | 0% | 322 | 0 | 100% | 0% | 322 |
| Total | | 3504 | 27 | 3531 | 99% | 1% | 500 | 32 | 532 | 94% | 6% | 4004 | 59 | 99% | 1% | 4063 |

2013 Region 6 Deer Harvest by GMU

| Game Mgt. Unit Name | Game Mgt. Unit | State Buck | Tribal Buck | Total Harvest | State % | Tribal % | State Doe | Tribal Doe | Total Harvest | State % | Tribal % | State Total | Tribal Total | State % | Tribal % | Total Harvest |
|---------------------|----------------|-------------|-------------|---------------|------------|-----------|------------|------------|---------------|------------|------------|-------------|--------------|------------|-----------|---------------|
| Hoko | 601 | 22 | 6 | 28 | 79% | 21% | 0 | 0 | 0 | 0% | 0% | 22 | 6 | 79% | 21% | 28 |
| Dickey | 602 | 85 | 17 | 102 | 83% | 17% | 0 | 0 | 0 | 0% | 0% | 85 | 17 | 83% | 17% | 102 |
| Pysht | 603 | 92 | 6 | 98 | 94% | 6% | 6 | 0 | 6 | 100% | 0% | 98 | 6 | 94% | 6% | 104 |
| Sol Duc | 607 | 39 | 1 | 40 | 98% | 3% | 0 | 0 | 0 | 0% | 0% | 39 | 1 | 98% | 3% | 40 |
| Goodman | 612 | 33 | 5 | 38 | 87% | 13% | 0 | 0 | 0 | 0% | 0% | 33 | 5 | 87% | 13% | 38 |
| Clearwater | 615 | 22 | 6 | 28 | 79% | 21% | 0 | 3 | 3 | 0% | 100% | 22 | 9 | 71% | 29% | 31 |
| Matheny | 618 | 4 | 0 | 4 | 100% | 0% | 0 | 0 | 0 | 0% | 0% | 4 | 0 | 100% | 0% | 4 |
| Olympic | 621 | 262 | 29 | 291 | 90% | 10% | 45 | 13 | 58 | 78% | 22% | 307 | 42 | 88% | 12% | 349 |
| Coyle | 624 | 193 | 15 | 208 | 93% | 7% | 41 | 5 | 46 | 89% | 11% | 234 | 20 | 92% | 8% | 254 |
| Kitsap | 627 | 192 | 1 | 193 | 99% | 1% | 48 | 0 | 48 | 100% | 0% | 240 | 1 | 100% | 0% | 241 |
| Mason | 633 | 230 | 0 | 230 | 100% | 0% | 38 | 0 | 38 | 100% | 0% | 268 | 0 | 100% | 0% | 268 |
| Skokomish | 636 | 118 | 36 | 154 | 77% | 23% | 13 | 12 | 25 | 52% | 48% | 131 | 48 | 73% | 27% | 179 |
| Quinault Ridge | 638 | 16 | 3 | 19 | 84% | 16% | 4 | 0 | 4 | 100% | 0% | 20 | 3 | 87% | 13% | 23 |
| Copalis | 642 | 54 | 6 | 60 | 90% | 10% | 6 | 1 | 7 | 86% | 14% | 60 | 7 | 90% | 10% | 67 |
| Wynoochee | 648 | 233 | 6 | 239 | 97% | 3% | 39 | 1 | 40 | 98% | 3% | 272 | 7 | 97% | 3% | 279 |
| Satsop | 651 | 316 | 45 | 361 | 88% | 12% | 34 | 22 | 56 | 61% | 39% | 350 | 67 | 84% | 16% | 417 |
| Puyallup | 652 | 145 | 1 | 146 | 99% | 1% | 27 | 0 | 27 | 100% | 0% | 172 | 1 | 99% | 1% | 173 |
| White River | 653 | 75 | 32 | 107 | 70% | 30% | 5 | 4 | 9 | 56% | 44% | 80 | 36 | 69% | 31% | 116 |
| Mashel | 654 | 259 | 0 | 259 | 100% | 0% | 67 | 3 | 70 | 96% | 4% | 326 | 3 | 99% | 1% | 329 |
| North River | 658 | 92 | 0 | 92 | 100% | 0% | 16 | 0 | 16 | 100% | 0% | 108 | 0 | 100% | 0% | 108 |
| Minot Peak | 660 | 173 | 0 | 173 | 100% | 0% | 18 | 0 | 18 | 100% | 0% | 191 | 0 | 100% | 0% | 191 |
| Capitol Peak | 663 | 332 | 10 | 342 | 97% | 3% | 74 | 12 | 86 | 86% | 14% | 406 | 22 | 95% | 5% | 428 |
| Deschutes | 666 | 181 | 5 | 186 | 97% | 3% | 65 | 4 | 69 | 94% | 6% | 246 | 9 | 96% | 4% | 255 |
| Skookumchuck | 667 | 612 | 1 | 613 | 100% | 0% | 106 | 2 | 108 | 98% | 2% | 718 | 3 | 100% | 0% | 721 |
| Fall River | 672 | 169 | 0 | 169 | 100% | 0% | 43 | 0 | 43 | 100% | 0% | 212 | 0 | 100% | 0% | 212 |
| Williams Crk. | 673 | 179 | 0 | 179 | 100% | 0% | 41 | 0 | 41 | 100% | 0% | 220 | 0 | 100% | 0% | 220 |
| Bear River | 681 | 26 | 0 | 26 | 100% | 0% | 1 | 0 | 1 | 100% | 0% | 27 | 0 | 100% | 0% | 27 |
| Long Beach | 684 | 31 | 0 | 31 | 100% | 0% | 7 | 0 | 7 | 100% | 0% | 38 | 0 | 100% | 0% | 38 |
| Long Island | 699 | 0 | 0 | 0 | 0% | 0% | 1 | 0 | 1 | 100% | 0% | 1 | 0 | 100% | 0% | 1 |
| Total | | 4185 | 231 | 4416 | 95% | 5% | 745 | 82 | 827 | 90% | 10% | 4930 | 313 | 94% | 6% | 5243 |

2013 Region 1 Elk Harvest by GMU

| Game Mgt. Unit Name | Game Mgt. Unit | State Bull | Tribal Bull | Total Harvest | State % | Tribal % | State Cow | Tribal Cow | Total Harvest | State % | Tribal % | State Total | Tribal Total | State % | Tribal % | Total Harvest |
|---------------------|----------------|------------|-------------|---------------|-------------|-----------|------------|------------|---------------|-------------|-----------|-------------|--------------|-------------|-----------|---------------|
| Sherman | 101 | 7 | 0 | 7 | 100% | 0% | 1 | 0 | 1 | 0% | 0% | 8 | 0 | 100% | 0% | 8 |
| Kelly Hill | 105 | 18 | 0 | 18 | 100% | 0% | 1 | 0 | 1 | 100% | 0% | 19 | 0 | 100% | 0% | 19 |
| Douglas | 108 | 10 | 0 | 10 | 100% | 0% | 3 | 0 | 3 | 0% | 0% | 13 | 0 | 100% | 0% | 13 |
| Aladdin | 111 | 20 | 0 | 20 | 100% | 0% | 8 | 0 | 8 | 100% | 0% | 28 | 0 | 100% | 0% | 28 |
| Selkirk | 113 | 43 | 0 | 43 | 100% | 0% | 16 | 0 | 16 | 100% | 0% | 59 | 0 | 100% | 0% | 59 |
| 49 Degrees N. | 117 | 85 | 0 | 85 | 100% | 0% | 20 | 0 | 20 | 100% | 0% | 105 | 0 | 100% | 0% | 105 |
| Huckleberry | 121 | 22 | 0 | 22 | 100% | 0% | 4 | 0 | 4 | 100% | 0% | 26 | 0 | 100% | 0% | 26 |
| Mt. Spokane | 124 | 31 | 0 | 31 | 100% | 0% | 33 | 0 | 33 | 100% | 0% | 64 | 0 | 100% | 0% | 64 |
| Mica Peak | 127 | 26 | 0 | 26 | 100% | 0% | 35 | 0 | 35 | 100% | 0% | 61 | 0 | 100% | 0% | 61 |
| Cheney | 130 | 25 | 0 | 25 | 100% | 0% | 49 | 0 | 49 | 100% | 0% | 74 | 0 | 100% | 0% | 74 |
| Roosevelt | 133 | 2 | 0 | 2 | 100% | 0% | 2 | 0 | 2 | 100% | 0% | 4 | 0 | 100% | 0% | 4 |
| Harrington | 136 | 5 | 0 | 5 | 100% | 0% | 2 | 0 | 2 | 100% | 0% | 7 | 0 | 100% | 0% | 7 |
| Steptoe | 139 | 15 | 0 | 15 | 100% | 0% | 18 | 0 | 18 | 100% | 0% | 33 | 0 | 100% | 0% | 33 |
| Almota | 142 | 17 | 0 | 17 | 100% | 0% | 22 | 0 | 22 | 100% | 0% | 39 | 0 | 100% | 0% | 39 |
| Mayview | 145 | 0 | 0 | 0 | 0% | 0% | 1 | 0 | 1 | 100% | 0% | 1 | 0 | 100% | 0% | 1 |
| Prescott | 149 | 12 | 0 | 12 | 100% | 0% | 6 | 0 | 6 | 100% | 0% | 18 | 0 | 100% | 0% | 18 |
| Blue Creek | 154 | 25 | 0 | 25 | 100% | 0% | 24 | 0 | 24 | 100% | 0% | 49 | 0 | 100% | 0% | 49 |
| Mill Creek | 157 | 16 | 0 | 16 | 100% | 0% | 0 | 0 | 0 | 0% | 0% | 16 | 0 | 100% | 0% | 16 |
| Dayton | 162 | 54 | 0 | 54 | 100% | 0% | 33 | 0 | 33 | 100% | 0% | 87 | 0 | 100% | 0% | 87 |
| Marengo | 163 | 1 | 0 | 1 | 100% | 0% | 8 | 0 | 8 | 100% | 0% | 9 | 0 | 100% | 0% | 9 |
| Tucannon | 166 | 37 | 0 | 37 | 100% | 0% | 0 | 0 | 0 | 0% | 0% | 37 | 0 | 100% | 0% | 37 |
| Wenaha | 169 | 24 | 0 | 24 | 100% | 0% | 0 | 0 | 0 | 0% | 0% | 24 | 0 | 100% | 0% | 24 |
| Mountain View | 172 | 40 | 0 | 40 | 100% | 0% | 9 | 0 | 9 | 100% | 0% | 49 | 0 | 100% | 0% | 49 |
| Lick Creek | 175 | 27 | 0 | 27 | 100% | 0% | 40 | 0 | 40 | 100% | 0% | 67 | 0 | 100% | 0% | 67 |
| Peola | 178 | 9 | 0 | 9 | 100% | 0% | 9 | 0 | 9 | 100% | 0% | 18 | 0 | 100% | 0% | 18 |
| Couse | 181 | 3 | 0 | 3 | 100% | 0% | 7 | 0 | 7 | 100% | 0% | 10 | 0 | 100% | 0% | 10 |
| Grande Ronde | 186 | 1 | 0 | 1 | 100% | 0% | 0 | 0 | 0 | 100% | 0% | 1 | 0 | 100% | 0% | 1 |
| Total | | 575 | 0 | 575 | 100% | 0% | 351 | 0 | 351 | 100% | 0% | 926 | 0 | 100% | 0% | 926 |

2013 Region 2 Elk Harvest by GMU

| Game Mgt. Unit Name | Game Mgt. Unit | State Bull | Tribal Bull | Total Harvest | State % | Tribal % | State Cow | Tribal Cow | Total Harvest | State % | Tribal % | State Total | Tribal Total | State % | Tribal % | Total Harvest |
|---------------------|----------------|------------|-------------|---------------|-------------|-----------|-----------|------------|---------------|-------------|-----------|-------------|--------------|-------------|-----------|---------------|
| Ritzville | 203 | 0 | 0 | 0 | 0% | 0% | 0 | 0 | 0 | 0% | 0% | 0 | 0 | 0% | 0% | 0 |
| Okanogan | 204 | 8 | 0 | 8 | 100% | 0% | 0 | 0 | 0 | 0% | 0% | 8 | 0 | 100% | 0% | 8 |
| Wannacut | 209 | 0 | 0 | 0 | 0% | 0% | 0 | 0 | 0 | 0% | 0% | 0 | 0 | 0% | 0% | 0 |
| Sinlahekin | 215 | 2 | 0 | 2 | 100% | 0% | 1 | 0 | 1 | 100% | 0% | 3 | 0 | 100% | 0% | 3 |
| Chewuch | 218 | 0 | 0 | 0 | 0% | 0% | 0 | 0 | 0 | 0% | 0% | 0 | 0 | 0% | 0% | 0 |
| Pearygin | 224 | 2 | 0 | 2 | 100% | 0% | 0 | 0 | 0 | 0% | 0% | 2 | 0 | 100% | 0% | 2 |
| Gardner | 231 | 0 | 0 | 0 | 0% | 0% | 0 | 0 | 0 | 0% | 0% | 0 | 0 | 0% | 0% | 0 |
| Pogue | 233 | 2 | 0 | 2 | 100% | 0% | 0 | 0 | 0 | 0% | 0% | 2 | 0 | 100% | 0% | 2 |
| Chilliwist | 239 | 0 | 0 | 0 | 0% | 0% | 2 | 0 | 2 | 100% | 0% | 2 | 0 | 100% | 0% | 2 |
| Alta | 242 | 0 | 0 | 0 | 0% | 0% | 0 | 0 | 0 | 0% | 0% | 0 | 0 | 0% | 0% | 0 |
| Manson | 243 | 0 | 0 | 0 | 0% | 0% | 0 | 0 | 0 | 0% | 0% | 0 | 0 | 0% | 0% | 0 |
| Clark | 244 | 2 | 0 | 2 | 100% | 0% | 0 | 0 | 0 | 0% | 0% | 2 | 0 | 100% | 0% | 2 |
| Chiwawa | 245 | 2 | 0 | 2 | 100% | 0% | 0 | 0 | 0 | 0% | 0% | 2 | 0 | 100% | 0% | 2 |
| Slide Ridge | 246 | 0 | 0 | 0 | 0% | 0% | 0 | 0 | 0 | 0% | 0% | 0 | 0 | 0% | 0% | 0 |
| Entiat | 247 | 0 | 0 | 0 | 0% | 0% | 0 | 0 | 0 | 0% | 0% | 0 | 0 | 0% | 0% | 0 |
| Big Bend | 248 | 0 | 0 | 0 | 0% | 0% | 0 | 0 | 0 | 0% | 0% | 0 | 0 | 0% | 0% | 0 |
| Alpine | 249 | 6 | 0 | 6 | 100% | 0% | 0 | 0 | 0 | 0% | 0% | 6 | 0 | 100% | 0% | 6 |
| Swakane | 250 | 1 | 0 | 1 | 100% | 0% | 3 | 0 | 3 | 100% | 0% | 4 | 0 | 100% | 0% | 4 |
| Mission | 251 | 42 | 0 | 42 | 100% | 0% | 33 | 0 | 33 | 100% | 0% | 75 | 0 | 100% | 0% | 75 |
| Saint Andrews | 254 | 0 | 0 | 0 | 0% | 0% | 0 | 0 | 0 | 0% | 0% | 0 | 0 | 0% | 0% | 0 |
| Foster Creek | 260 | 0 | 0 | 0 | 0% | 0% | 0 | 0 | 0 | 0% | 0% | 0 | 0 | 0% | 0% | 0 |
| Withrow | 262 | 0 | 0 | 0 | 0% | 0% | 0 | 0 | 0 | 0% | 0% | 0 | 0 | 0% | 0% | 0 |
| Badger | 266 | 0 | 0 | 0 | 100% | 0% | 0 | 0 | 0 | 0% | 0% | 0 | 0 | 0% | 0% | 0 |
| Moses Coulee | 269 | 0 | 0 | 0 | 0% | 0% | 0 | 0 | 0 | 0% | 0% | 0 | 0 | 0% | 0% | 0 |
| Beezley | 272 | 0 | 0 | 0 | 0% | 0% | 0 | 0 | 0 | 0% | 0% | 0 | 0 | 0% | 0% | 0 |
| Wahluke | 278 | 0 | 0 | 0 | 0% | 0% | 1 | 0 | 1 | 100% | 0% | 1 | 0 | 100% | 0% | 1 |
| Ritzville | 284 | 4 | 0 | 4 | 100% | 0% | 3 | 0 | 3 | 100% | 0% | 7 | 0 | 100% | 0% | 7 |
| Desert | 290 | 0 | 0 | 0 | 0% | 0% | 0 | 0 | 0 | 0% | 0% | 0 | 0 | 0% | 0% | 0 |
| Total | | 71 | 0 | 71 | 100% | 0% | 43 | 0 | 43 | 100% | 0% | 114 | 0 | 100% | 0% | 114 |

2013 Region 3 Elk Harvest by GMU

| Game Mgt. Unit Name | Game Mgt. Unit | State Bull | Tribal Bull | Total Harvest | State % | Tribal % | State Cow | Tribal Cow | Total Harvest | State % | Tribal % | State Total | Tribal Total | State % | Tribal % | Total Harvest |
|---------------------|----------------|------------|-------------|---------------|-------------|-----------|-------------|------------|---------------|------------|-----------|-------------|--------------|-------------|-----------|---------------|
| Naneum | 328 | 132 | 0 | 132 | 100% | 0% | 155 | 0 | 155 | 100% | 0% | 287 | 0 | 100% | 0% | 287 |
| Quilomene | 329 | 92 | 0 | 92 | 100% | 0% | 89 | 0 | 89 | 100% | 0% | 181 | 0 | 100% | 0% | 181 |
| West Bar | 330 | 0 | 0 | 0 | 0% | 0% | 6 | 0 | 6 | 100% | 0% | 6 | 0 | 100% | 0% | 6 |
| Ellensburg | 334 | 5 | 0 | 5 | 100% | 0% | 20 | 0 | 20 | 100% | 0% | 25 | 0 | 100% | 0% | 25 |
| Teanaway | 335 | 23 | 0 | 23 | 100% | 0% | 33 | 0 | 33 | 100% | 0% | 56 | 0 | 100% | 0% | 56 |
| Taneum | 336 | 53 | 0 | 53 | 100% | 0% | 68 | 0 | 68 | 100% | 0% | 121 | 0 | 100% | 0% | 121 |
| Manastash | 340 | 71 | 0 | 71 | 100% | 0% | 87 | 0 | 87 | 100% | 0% | 158 | 0 | 100% | 0% | 158 |
| Umtanum | 342 | 60 | 0 | 60 | 100% | 0% | 105 | 0 | 105 | 100% | 0% | 165 | 0 | 100% | 0% | 165 |
| Little Naches | 346 | 102 | 0 | 102 | 100% | 0% | 50 | 0 | 50 | 100% | 0% | 152 | 0 | 100% | 0% | 152 |
| Nile | 352 | 53 | 0 | 53 | 100% | 0% | 71 | 0 | 71 | 100% | 0% | 124 | 0 | 100% | 0% | 124 |
| Bumping | 356 | 54 | 1 | 55 | 98% | 2% | 58 | 0 | 58 | 100% | 0% | 112 | 1 | 99% | 1% | 113 |
| Bethel | 360 | 62 | 0 | 62 | 100% | 0% | 19 | 0 | 19 | 100% | 0% | 81 | 0 | 100% | 0% | 81 |
| Rimrock | 364 | 67 | 0 | 67 | 100% | 0% | 96 | 0 | 96 | 100% | 0% | 163 | 0 | 100% | 0% | 163 |
| Cowiche | 368 | 105 | 0 | 105 | 100% | 0% | 210 | 0 | 210 | 100% | 0% | 315 | 0 | 100% | 0% | 315 |
| Alkali | 371 | 12 | 0 | 12 | 100% | 0% | 18 | 0 | 18 | 100% | 0% | 30 | 0 | 100% | 0% | 30 |
| Rattlesnake | 372 | 16 | 0 | 16 | 100% | 0% | 9 | 0 | 9 | 100% | 0% | 25 | 0 | 100% | 0% | 25 |
| Horse Heaven | 373 | 0 | 0 | 0 | 0% | 0% | 0 | 0 | 0 | 0% | 0% | 0 | 0 | 0% | 0% | 0 |
| Ringold | 379 | 2 | 0 | 2 | 100% | 0% | 0 | 0 | 0 | 0% | 0% | 2 | 0 | 100% | 0% | 2 |
| Kahlotus | 381 | 2 | 0 | 2 | 100% | 0% | 2 | 0 | 2 | 100% | 0% | 4 | 0 | 100% | 0% | 4 |
| E. Klickitat | 382 | 0 | 0 | 0 | 0% | 0% | 0 | 0 | 0 | 0% | 0% | 0 | 0 | 0% | 0% | 0 |
| Grayback | 388 | 1 | 0 | 1 | 100% | 0% | 2 | 0 | 2 | 100% | 0% | 3 | 0 | 100% | 0% | 3 |
| Total | | 912 | 1 | 913 | 100% | 0% | 1098 | 0 | 1098 | 99% | 0% | 2010 | 1 | 100% | 0% | 2011 |

2013 Region 4 Elk Harvest by GMU

| Game Mgt. Unit Name | Game Mgt. Unit | State Bull | Tribal Bull | Total Harvest | State % | Tribal % | State Cow | Tribal Cow | Total Harvest | State % | Tribal % | State Total | Tribal Total | State % | Tribal % | Total Harvest |
|---------------------|----------------|------------|-------------|---------------|------------|------------|------------|------------|---------------|------------|------------|-------------|--------------|------------|------------|---------------|
| North Sound | 407 | 5 | 0 | 5 | 100% | 0% | 8 | 2 | 10 | 80% | 20% | 13 | 2 | 87% | 13% | 15 |
| Islands | 410 | 0 | 0 | 0 | 0% | 0% | 0 | 0 | 0 | 0% | 0% | 0 | 0 | 0% | 0% | 0 |
| Nooksack | 418 | 15 | 19 | 34 | 44% | 56% | 9 | 0 | 9 | 100% | 0% | 24 | 19 | 56% | 44% | 43 |
| Diablo | 426 | 0 | 0 | 0 | 0% | 0% | 0 | 0 | 0 | 0% | 0% | 0 | 0 | 0% | 0% | 0 |
| Sauk | 437 | 2 | 17 | 19 | 11% | 89% | 15 | 9 | 24 | 63% | 38% | 17 | 26 | 40% | 60% | 43 |
| Stillaguamish | 448 | 12 | 0 | 12 | 100% | 0% | 1 | 0 | 1 | 100% | 0% | 13 | 0 | 100% | 0% | 13 |
| Cascade | 450 | 0 | 0 | 0 | 0% | 0% | 0 | 0 | 0 | 0% | 0% | 0 | 0 | 0% | 0% | 0 |
| Issaquah | 454 | 59 | 2 | 61 | 97% | 3% | 53 | 0 | 53 | 100% | 0% | 112 | 2 | 98% | 2% | 114 |
| Snoqualmie | 460 | 55 | 0 | 55 | 100% | 0% | 16 | 1 | 17 | 94% | 6% | 71 | 1 | 99% | 1% | 72 |
| Stampede | 466 | 13 | 17 | 30 | 43% | 57% | 0 | 1 | 1 | 0% | 100% | 13 | 18 | 42% | 58% | 31 |
| Green River | 485 | 4 | 7 | 11 | 36% | 64% | 0 | 0 | 0 | 0% | 0% | 4 | 7 | 36% | 64% | 11 |
| Cedar River | 490 | 0 | 4 | 4 | 0% | 100% | 0 | 0 | 0 | 0% | 0% | 0 | 4 | 0% | 100% | 4 |
| Total | | 165 | 66 | 231 | 71% | 29% | 102 | 13 | 115 | 89% | 11% | 267 | 79 | 77% | 23% | 346 |

2013 Region 5 Elk Harvest by GMU

| Game Mgt. Unit Name | Game Mgt. Unit | State Bull | Tribal Bull | Total Harvest | State % | Tribal % | State Cow | Tribal Cow | Total Harvest | State % | Tribal % | State Total | Tribal Total | State % | Tribal % | Total Harvest |
|---------------------|----------------|-------------|-------------|---------------|------------|-----------|-------------|------------|---------------|------------|-----------|-------------|--------------|------------|-----------|---------------|
| Lincoln | 501 | 18 | 0 | 18 | 100% | 0% | 28 | 0 | 28 | 100% | 0% | 46 | 0 | 100% | 0% | 46 |
| Randle | 503 | 22 | 6 | 28 | 79% | 21% | 31 | 15 | 46 | 67% | 33% | 53 | 21 | 72% | 28% | 74 |
| Stella | 504 | 12 | 0 | 12 | 100% | 0% | 35 | 0 | 35 | 100% | 0% | 47 | 0 | 100% | 0% | 47 |
| Mossyrock | 505 | 45 | 0 | 45 | 100% | 0% | 44 | 0 | 44 | 100% | 0% | 89 | 0 | 100% | 0% | 89 |
| Willapa Hills | 506 | 196 | 0 | 196 | 100% | 0% | 81 | 0 | 81 | 100% | 0% | 277 | 0 | 100% | 0% | 277 |
| Stormking | 510 | 15 | 0 | 15 | 100% | 0% | 0 | 0 | 0 | 0% | 0% | 15 | 0 | 100% | 0% | 15 |
| South Rainier | 513 | 51 | 1 | 52 | 98% | 2% | 0 | 3 | 3 | 0% | 100% | 51 | 4 | 93% | 7% | 55 |
| Packwood | 516 | 61 | 28 | 89 | 69% | 31% | 1 | 46 | 47 | 2% | 98% | 62 | 74 | 46% | 54% | 136 |
| Winston | 520 | 207 | 0 | 207 | 100% | 0% | 230 | 0 | 230 | 100% | 0% | 437 | 0 | 100% | 0% | 437 |
| Loo-Wit | 522 | 13 | 0 | 13 | 100% | 0% | 11 | 0 | 11 | 100% | 0% | 24 | 0 | 100% | 0% | 24 |
| Margaret | 524 | 58 | 0 | 58 | 100% | 0% | 87 | 0 | 87 | 100% | 0% | 145 | 0 | 100% | 0% | 145 |
| Ryderwood | 530 | 200 | 0 | 200 | 100% | 0% | 138 | 0 | 138 | 100% | 0% | 338 | 0 | 100% | 0% | 338 |
| Coweeman | 550 | 209 | 0 | 209 | 100% | 0% | 163 | 0 | 163 | 100% | 0% | 372 | 0 | 100% | 0% | 372 |
| Yale | 554 | 19 | 0 | 19 | 100% | 0% | 18 | 0 | 18 | 100% | 0% | 37 | 0 | 100% | 0% | 37 |
| Toutle | 556 | 51 | 0 | 51 | 100% | 0% | 147 | 0 | 147 | 100% | 0% | 198 | 0 | 100% | 0% | 198 |
| Marble | 558 | 0 | 0 | 0 | 0% | 0% | 0 | 0 | 0 | 0% | 0% | 0 | 0 | 0% | 0% | 0 |
| Lewis River | 560 | 223 | 0 | 223 | 100% | 0% | 80 | 0 | 80 | 100% | 0% | 303 | 0 | 100% | 0% | 303 |
| Battle Ground | 564 | 25 | 0 | 25 | 100% | 0% | 39 | 0 | 39 | 100% | 0% | 64 | 0 | 100% | 0% | 64 |
| Washougal | 568 | 30 | 0 | 30 | 100% | 0% | 16 | 0 | 16 | 100% | 0% | 46 | 0 | 100% | 0% | 46 |
| Siouxon | 572 | 77 | 0 | 77 | 100% | 0% | 26 | 0 | 26 | 100% | 0% | 103 | 0 | 100% | 0% | 103 |
| Wind River | 574 | 23 | 0 | 23 | 100% | 0% | 21 | 0 | 21 | 100% | 0% | 44 | 0 | 100% | 0% | 44 |
| Klickitat | 578 | 45 | 0 | 45 | 100% | 0% | 36 | 0 | 36 | 100% | 0% | 81 | 0 | 100% | 0% | 81 |
| Total | | 1600 | 35 | 1635 | 98% | 2% | 1232 | 64 | 1296 | 95% | 5% | 2832 | 99 | 97% | 3% | 2931 |

2013 Region 6 Elk Harvest by GMU

| Game Mgt. Unit Name | Game Mgt. Unit | State Bull | Tribal Bull | Total Harvest | State % | Tribal % | State Cow | Tribal Cow | Total Harvest | State % | Tribal % | State Total | Tribal Total | State % | Tribal % | Total Harvest |
|---------------------|----------------|------------|-------------|---------------|------------|------------|------------|------------|---------------|------------|------------|-------------|--------------|------------|------------|---------------|
| Hoko | 601 | 6 | 18 | 24 | 25% | 75% | 2 | 6 | 8 | 25% | 75% | 8 | 24 | 25% | 75% | 32 |
| Dickey | 602 | 23 | 22 | 45 | 51% | 49% | 0 | 10 | 10 | 0% | 100% | 23 | 32 | 42% | 58% | 55 |
| Pysht | 603 | 16 | 2 | 18 | 89% | 11% | 0 | 0 | 0 | 0% | 0% | 16 | 2 | 89% | 11% | 18 |
| Sol Duc | 607 | 26 | 8 | 34 | 76% | 24% | 0 | 6 | 6 | 0% | 100% | 26 | 14 | 65% | 35% | 40 |
| Goodman | 612 | 18 | 23 | 41 | 44% | 56% | 0 | 6 | 6 | 0% | 100% | 18 | 29 | 38% | 62% | 47 |
| Clearwater | 615 | 40 | 32 | 72 | 56% | 44% | 0 | 14 | 14 | 0% | 100% | 40 | 46 | 47% | 53% | 86 |
| Matheny | 618 | 19 | 2 | 21 | 90% | 10% | 0 | 0 | 0 | 0% | 0% | 19 | 2 | 90% | 10% | 21 |
| Olympic | 621 | 4 | 12 | 16 | 25% | 75% | 1 | 4 | 5 | 20% | 80% | 5 | 16 | 24% | 76% | 21 |
| Coyle | 624 | 0 | 0 | 0 | 100% | 0% | 1 | 0 | 1 | 100% | 0% | 1 | 0 | 100% | 0% | 1 |
| Kitsap | 627 | 0 | 0 | 0 | 0% | 0% | 0 | 0 | 0 | 0% | 0% | 0 | 0 | 0% | 0% | 0 |
| Mason | 633 | 0 | 0 | 0 | 0% | 0% | 0 | 0 | 0 | 0% | 0% | 0 | 0 | 0% | 0% | 0 |
| Skokomish | 636 | 1 | 11 | 12 | 8% | 92% | 0 | 0 | 0 | 0% | 0% | 1 | 11 | 8% | 92% | 12 |
| Quinault Ridge | 638 | 22 | 3 | 25 | 88% | 12% | 0 | 0 | 0 | 0% | 0% | 22 | 3 | 88% | 12% | 25 |
| Copalis | 642 | 4 | 2 | 6 | 67% | 33% | 0 | 0 | 0 | 0% | 0% | 4 | 2 | 67% | 33% | 6 |
| Wynoochee | 648 | 25 | 5 | 30 | 83% | 17% | 7 | 1 | 8 | 88% | 13% | 32 | 6 | 84% | 16% | 38 |
| Satsop | 651 | 19 | 11 | 30 | 63% | 37% | 2 | 2 | 4 | 50% | 50% | 21 | 13 | 62% | 38% | 34 |
| Puyallup | 652 | 63 | 0 | 63 | 100% | 0% | 50 | 0 | 50 | 100% | 0% | 113 | 0 | 100% | 0% | 113 |
| White River | 653 | 16 | 38 | 54 | 30% | 70% | 0 | 6 | 6 | 0% | 100% | 16 | 44 | 27% | 73% | 60 |
| Mashel | 654 | 72 | 2 | 74 | 97% | 3% | 50 | 4 | 54 | 93% | 7% | 122 | 6 | 95% | 5% | 128 |
| North River | 658 | 98 | 0 | 98 | 100% | 0% | 13 | 0 | 13 | 100% | 0% | 111 | 0 | 100% | 0% | 111 |
| Minot Peak | 660 | 61 | 0 | 61 | 100% | 0% | 8 | 0 | 8 | 100% | 0% | 69 | 0 | 100% | 0% | 69 |
| Capitol Peak | 663 | 2 | 0 | 2 | 100% | 0% | 0 | 0 | 0 | 0% | 0% | 2 | 0 | 100% | 0% | 2 |
| Deschutes | 666 | 14 | 1 | 15 | 100% | 0% | 11 | 0 | 11 | 100% | 0% | 25 | 1 | 96% | 4% | 26 |
| Skookumchuck | 667 | 55 | 0 | 55 | 100% | 0% | 70 | 2 | 72 | 97% | 3% | 125 | 2 | 98% | 2% | 127 |
| Fall River | 672 | 50 | 0 | 50 | 100% | 0% | 45 | 0 | 45 | 100% | 0% | 95 | 0 | 100% | 0% | 95 |
| Williams Crk. | 673 | 137 | 0 | 137 | 100% | 0% | 56 | 0 | 56 | 100% | 0% | 193 | 0 | 100% | 0% | 193 |
| Bear River | 681 | 56 | 0 | 56 | 100% | 0% | 45 | 0 | 45 | 100% | 0% | 101 | 0 | 100% | 0% | 101 |
| Long Beach | 684 | 22 | 0 | 22 | 100% | 0% | 8 | 0 | 8 | 100% | 0% | 30 | 0 | 100% | 0% | 30 |
| Long Island | 699 | 6 | 0 | 6 | 100% | 0% | 10 | 0 | 10 | 100% | 0% | 16 | 0 | 100% | 0% | 16 |
| Total | | 875 | 192 | 1067 | 82% | 18% | 379 | 61 | 440 | 86% | 14% | 1254 | 253 | 83% | 17% | 1507 |

